

# TIMBERLAKE

PORTFOLIO SELECT *Series*

PORTFOLIO *Series*

VALUE BUILT *Series*

Full Line Brochure

---

2012



# PORTFOLIO SELECT Series

## SIERRA VISTA® Full Overlay, Mitered

MAPLE Solid Wood Door



PAINTED MAPLE Solid Wood Door



CHERRY Solid Wood Door



## DURANGO® Full Overlay, Raised Panel with Applied Molding

MAPLE Solid Wood Door



CHERRY Solid Wood Door



## TUCSON® Full Overlay, Bead Board

MAPLE Solid Wood Door



HICKORY Solid Wood Door



THERMO FOIL

\* Denotes Premium Finish

## NEW HAVEN™ Full Overlay, Recessed Panel, Shaker

MAPLE Solid Wood Door



PAINTED MAPLE Solid Wood Door



CHERRY Solid Wood Door



## YELLOWSTONE® Full Overlay, Recessed Panel, Shaker Styling

MAPLE Solid Wood Door



CHERRY Solid Wood Door



## RUSHMORE® Full Overlay, Raised Panel

MAPLE Solid Wood Door



PAINTED MAPLE Solid Wood Door



CHERRY Solid Wood Door



OAK Solid Wood Door



HICKORY Solid Wood Door



THERMO FOIL



**CAPISTRANO®** Full Overlay, Recessed Panel

**MAPLE** Veneer Center Panel



**CHERRY** Veneer Center Panel



**WYOMING®** Standard Overlay, Raised Panel (note: Thermo Foil is Full Overlay)

**MAPLE** Solid Wood Door



**CHERRY** Solid Wood Door



**OAK** Solid Wood Door



**HICKORY** Solid Wood Door



**THERMO FOIL**



\* Denotes Premium Finish

**LAUSANNE™** Full Overlay, Slab

MAPLE Veneer Panel



NATURAL  
39MNS



HONEY  
39MHS



SPICE  
39MSS



COGNAC  
39MRS



ESPRESSO  
39MJS

CHERRY Veneer Panel



SPICE  
39CSS



BORDEAUX  
39CBS



JAVA  
39CKS

**CUMBERLAND®** Full Overlay, Raised Panel

MAPLE Veneer Center Panel



NATURAL  
A5N/G5N



HONEY  
A5H/G5H



COFFEE GLAZE\*  
A5D/G5D



SPICE  
A5S/G5S



MOCHA GLAZE\*  
A5C/G5C



COGNAC  
A5R/G5R



AUBURN GLAZE\*  
A5E/G5E



ESPRESSO  
A5J/G5J

CHERRY Veneer Center Panel



SPICE  
A6S/G6S



CHOCOLATE GLAZE\*  
A6C/G6C



BORDEAUX  
A6B/G6B



JAVA  
A6K/G6K

**SONOMA®** Full Overlay, Recessed Panel, Shaker Styling

MAPLE Veneer Center Panel



NATURAL  
28MNS



HONEY  
28MHS



COFFEE GLAZE\*  
28MHD



SPICE  
28MSS



MOCHA GLAZE\*  
28MSC



COGNAC  
28MRS



AUBURN GLAZE\*  
28MRE



ESPRESSO  
28MJS

CHERRY Veneer Center Panel



SPICE  
28CSS



CHOCOLATE GLAZE\*  
28CSC



BORDEAUX  
28CBS



JAVA  
28CKS

# SCOTTSDALE® Standard Overlay, Raised Panel

MAPLE Veneer Center Panel



NATURAL  
N3N/T3N

HONEY  
N3H/T3H

COFFEE GLAZE\*  
N3D/T3D

SPICE  
N3S/T3S

MOCHA GLAZE\*  
N3C/T3C

COGNAC  
N3R/T3R

AUBURN GLAZE\*  
N3E/T3E

ESPRESSO  
N3J

CHERRY Veneer Center Panel



SPICE  
N6S

CHOCOLATE GLAZE\*  
N6C

BORDEAUX  
N6B

JAVA  
N6K

OAK Veneer Center Panel



NATURAL  
N1N/T1N

HONEY  
N1H/T1H

TAWNY  
N1T/T1T

ESPRESSO  
N1J

# TAHOE® Standard Overlay, Recessed Panel

MAPLE Veneer Center Panel



NATURAL  
Y3N/E3N

HONEY  
Y3H/E3H

COFFEE GLAZE\*  
Y3D/E3D

SPICE  
Y3S/E3S

MOCHA GLAZE\*  
Y3C/E3C

COGNAC  
Y3R/E3R

AUBURN GLAZE\*  
Y3E/E3E

ESPRESSO  
Y3J

CHERRY Veneer Center Panel



SPICE  
Y6S/E6S

CHOCOLATE GLAZE\*  
Y6C/E6C

BORDEAUX  
Y6B/E6B

JAVA  
Y6K/E6K

OAK Veneer Center Panel



NATURAL  
Y1N/E1N

HONEY  
Y1H/E1H

TAWNY  
Y1T/E1T

ESPRESSO  
Y1J

# YUKON® Full Overlay, Raised Panel

THERMO FOIL



WHITE  
I5W/ Q5W

\* Denotes Premium Finish

**ANDOVER®** Standard Overlay, Raised Panel

MAPLE Veneer Center Panel



HONEY  
R5H



SPICE  
R5S



NUTMEG  
R5V

OAK Veneer Center Panel



NATURAL  
R1N



HONEY  
R1H



TAWNY  
R1T

THERMO FOIL



WHITE  
S3W

**FAIRFIELD** Standard Overlay, Recessed Panel

MAPLE Veneer Center Panel



HONEY  
P5H



SPICE  
P5S



NUTMEG  
P5V

OAK Veneer Center Panel



NATURAL  
P1N



HONEY  
P1H



TAWNY  
P1T



PREMIUM FINISHES



PAINTED MAPLE  
LINEN\*



PAINTED MAPLE  
CREAM GLAZE\*



PAINTED MAPLE  
BUTTERSOTCH  
GLAZE\*



PAINTED MAPLE  
HAZELNUT GLAZE\*



MAPLE COFFEE  
GLAZE\*



MAPLE MOCHA  
GLAZE\*



MAPLE AUBURN  
GLAZE\*



CHERRY  
CHOCOLATE GLAZE\*

STANDARD FINISHES



MAPLE NATURAL



MAPLE HONEY



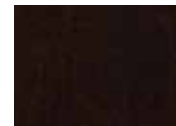
MAPLE SPICE



MAPLE COGNAC



MAPLE NUTMEG



MAPLE ESPRESSO



CHERRY SPICE



CHERRY BORDEAUX



CHERRY JAVA



OAK NATURAL



OAK HONEY



OAK TAWNY



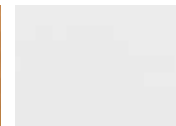
OAK ESPRESSO



HICKORY NATURAL



HICKORY SPICE



WHITE THERMO FOIL

\* Denotes Premium Finish

Photography is for illustration purposes only. Actual colors may vary slightly due to the printing process. For actual color selections, please consult your Timberlake distributor or builder. Painted maple finishes available exclusively in the Sierra Vista®, New Haven™ and Rushmore® collections.

P.O. BOX 1980 WINCHESTER, VIRGINIA 22604 | WWW.TIMBERLAKE.COM

© 2011 American Woodmark Corporation  
07/11 TBL98393 25M



**TIMBERLAKE**  
CABINETRY  
A DIVISION OF AMERICAN WOODMARK CORP.

# TIMBERLAKE FEATURES



## FEATURES IN TIMBERLAKE'S 3 PRODUCT TIERS

Portfolio  
SELECT

Portfolio

Value  
BUILT

### CABINET CONSTRUCTION

Solid Hardwood Face Frames	●	●	●
Tongue-and-Groove Cabinet Back Construction <sup>1</sup>	●	●	●
½" Thick Engineered Wood Cabinet Sides	●	●	●

<sup>1</sup> Tongue-and-Groove Cabinet Back Construction provides a sealed interior and easy installation

### FINISH

Multi-Step BeautyGuard <sup>®</sup> Finish <sup>2</sup>	●	●	
TuffTech <sup>®</sup> Interior Finish <sup>3</sup>	●	●	●

<sup>2</sup> BeautyGuard<sup>®</sup> is a finishing system that brings out the richness, luster and natural graining, while offering the ultimate protection from fading, staining and scratching

<sup>3</sup> TuffTech<sup>®</sup> Interior Finish is a bonded acrylic (or white melamine on white cabinets) that resists scratching, fading and moisture

### DRAWERS

21" Deep, ⅝" Thick Premium Dovetail Hardwood Drawers with Plywood Bottom*	●	OPTIONAL	
21" Deep Drawers, ½" Thick Finished Engineered Wood*		●	
18" Deep Drawers, ½" Thick Finished Engineered Wood			●

### DRAWER GLIDES

Full-Access Hidden Glides <sup>®*</sup>	●	OPTIONAL	
Full-Depth Drawers with Side-Mounted Glides		●	
Side-Mounted Drawer Glides			●
CushionClose <sup>®</sup> Glide Option	OPTIONAL	OPTIONAL	

### DOORS/HINGES

Solid Wood Doors**	●		
Veneer Doors		●	●
Adjustable Hidden Hinges <sup>®4</sup>	●	●	
Hidden Hinges <sup>®</sup>			●
CushionClose <sup>®</sup> for Doors	OPTIONAL	OPTIONAL	OPTIONAL

<sup>4</sup> Adjustable Hidden Hinges<sup>®</sup> provides easy alignment

### SHELVING

Adjustable Shelves	●	●	●
¾" Thick Wall and Base Shelving	●	●	
½" Thick Wall and Base Shelving			●

### WARRANTY

5-Year Limited Warranty	●	●	
2-Year Limited Warranty			●

### OPTIONS

Furniture Ends	●	●	
All Plywood Construction	●	●	
Plywood Veneered Sides	●	●	
Premium Finishes	●	●	
Reduced / Increased Depths	●	●	●
Glass Front Doors	●	●	●
Matching Interiors	●	●	●
Void Door	●	●	●
Cabinet Front Only	●	●	●
Inverted Frame <sup>5</sup>	●	●	●
Customizing Details <sup>6</sup>	●	●	●

<sup>5</sup> Inverted Frame Cabinet Option is available for most standard base cabinets

<sup>6</sup> Full range of moldings, valances and convenience accessories

\* Excluding Vanity and 21" Deep Desk Cabinetry

\*\* Capistrano<sup>®</sup> has veneer recessed panel